



# MONTHLY MEMBERSHIP PROGRESS REPORT

District 25 G

Results as of: 06/30/2018

GMT: STEVE ANTON

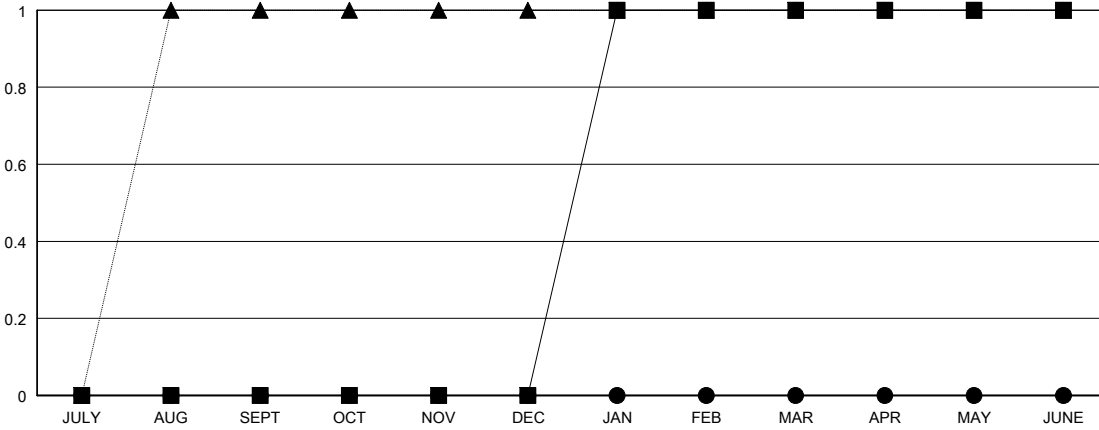
LOCATION INDIANA

GMT CA

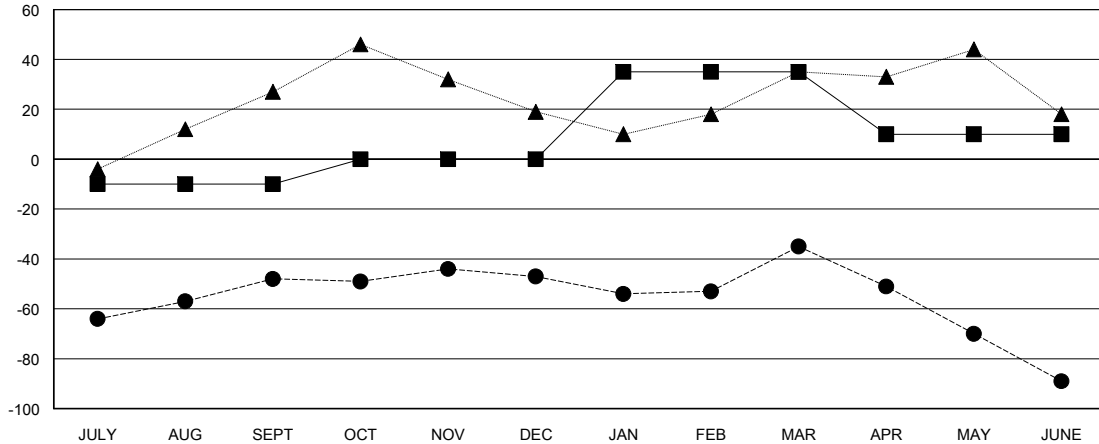
Clubs			
RESULTS FOR 2017-2018			
QUARTER	NEW CLUB GOAL	NEW CLUBS	DROPPED CLUBS
JULY/AUG/SEPT	0	0	0
OCT/NOV/DEC	0	0	1
JAN/FEB/MAR	1	0	0
APR/MAY/JUNE	0	0	0

Members			
RESULTS FOR 2017-2018			
QUARTER	MEMBER GROWTH NET GOAL	MEMBER GROWTH ACTUAL	DROPPED MEMBERS ACTUAL (including transfers)
JULY/AUG/SEPT	-10	33	80
OCT/NOV/DEC	10	23	22
JAN/FEB/MAR	35	41	28
APR/MAY/JUNE	-25	34	82

GOALS AND ACTUAL NEW CLUBS CUMULATIVE



GOALS AND ACTUAL MEMBERS CUMULATIVE



DROPPED CLUBS: 1	35 CLUBS OF 52 ADDED 1 OR MORE NEW MEMBERS	<u>GENDER DISTRIBUTION</u>	
DROPPED MEMBERS		MALE	1,027 (70.97%)
DECEASED	29	FEMALE	420 (29.03%)
CLUB CANCELLED	0	Women Percentage Fiscal Year Goal: 27%	
OTHER	183	TOTAL FAMILY UNIT MEMBERS	
TOTAL	212	0	
<a href="#">CLICK HERE FOR CUMULATIVE MEMBERSHIP DATA</a>		FAMILY MEMBERS PAYING HALF DUES	
		0	